

S.E. 1/4  
SECTION 16, T.6N., R.2E., S.L.B. & M.

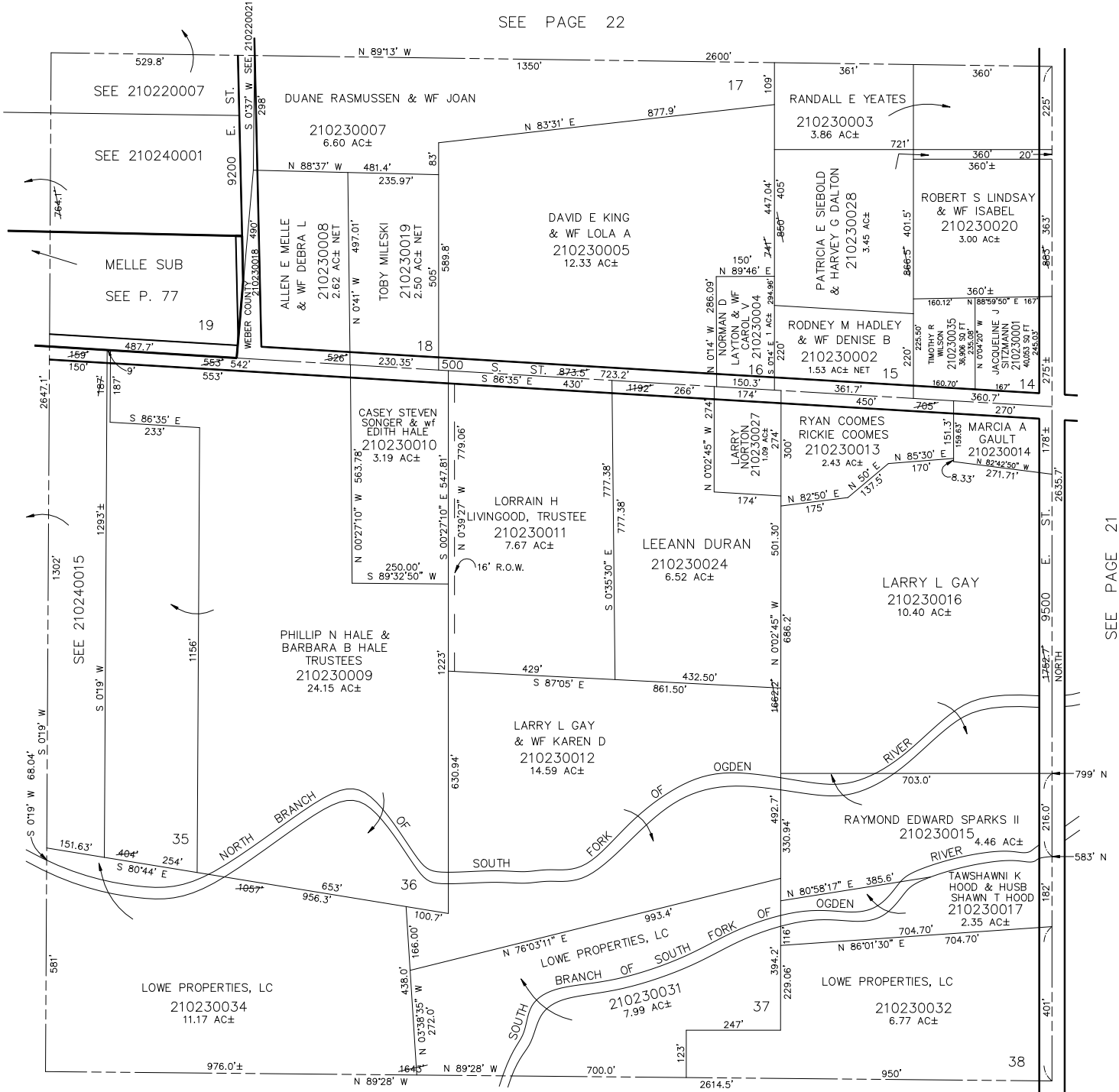
IN WEBER COUNTY  
SCALE 1" = 200'

TAXING UNIT: 318

SEE PAGE 22

SEE PAGE 24

SEE PAGE 21



SEE PAGE 35

NOTE: SEE ORIGINAL PLAT IN BOOK 6, PAGE 64.  
APPROXIMATE LOCATION OF RIVERS FROM  
1970 AERIAL PHOTO.